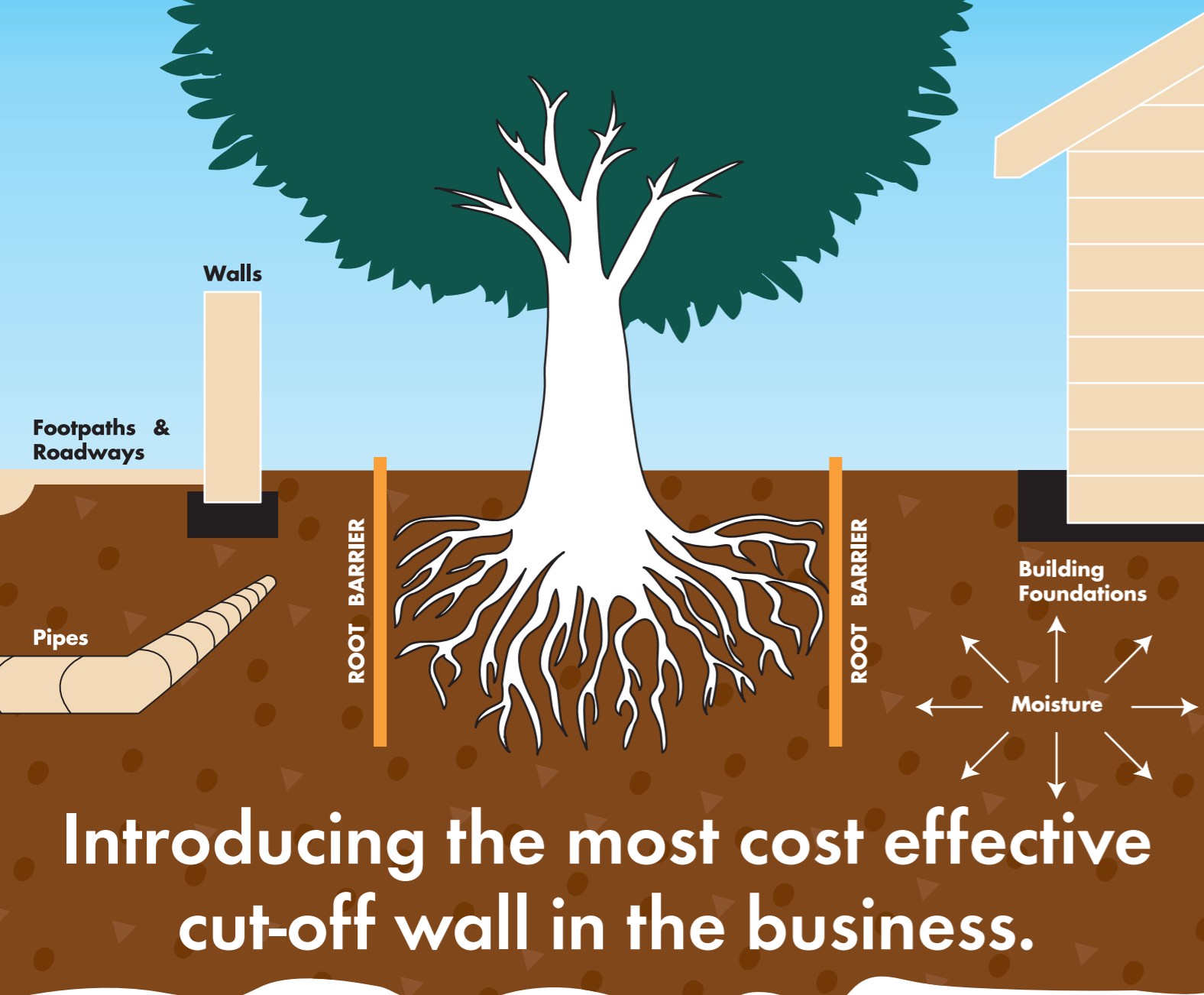


Problems with tree roots, moisture and reactive soils?



Introducing the most cost effective cut-off wall in the business.



The difference?
Oh, only about 300%

It's versatile.

Trees which in the past had to be removed because of their damaging effect on foundations, can now remain and exist quite happily along side of the buildings, without causing any problems underground. **Root Barrier** keeps the roots out and the moisture in. Due to new developments in the product and installation system, costs have been vastly reduced, and the requirements for heavy earth works with heavy machinery removed.

Technical Information & Product Specifications

| | |
|------------------------|--|
| MATERIAL | H.D.P.E |
| ROLL WIDTHS | 600mm, 900mm, 1200mm & 2000mm Fabrication available for larger widths |
| ROLL LENGTH | 30 metres |
| SHEET THICKNESS | 0.75mm plus or minus 0.05mm |

| Property | Test Method | Unit | Min. Values |
|--|---------------------|------------|-------------|
| Thickness (min. avg.) | ASTM D 5199 | mm. | 0.75 |
| Lowest individual value | | mm. | 0.68 |
| Density | ASTM D 1505 | g/cc | 0.94 |
| Tensile Properties (each direction)(min. avg.) | ASTM D 638 | | |
| Yeild Strength | TYPE IV, 2 ipm | N/mm width | 11 |
| Break Strength | | N/mm width | 21 |
| Yeild Elongation | G.L. 1.3 in. (33mm) | % | 13 |
| Break Elongation | G.L. 2.0 in. (51mm) | % | 700 |
| Tear Resistance (min. avg.) | ASTM D 1004 | N | 98 |
| Puncture Resistance (min. avg.) | ASTM D 4833 | N | 263 |
| Carbon Black Content (range) | ASTM D 1603 | % | 2.0-3.0 |
| Nutch Constant Tensile Load (min. avg.) | ASTM D 5397 | hr. | 400 |

FOR AN OBLIGATION FREE QUOTATION
PHONE 1300 136 644 or FAX (07) 3861 0701



A DIVISION OF COULTON PTY LTD
ABN 38 085 138 674
TRADING AS ROOT BARRIER
61 SOMERSET STREET, WINDSOR QLD 4030
TEL: 61 7 3861 0141